

DATE: 6 April 2020
 FROM: Autoflame Technical Engineering Department

Subject: New side view UV scanner – part # MM80004

Overview : New side view UV scanner, standard sensitivity, is now available, featuring a compact design, higher ingress protection level and built-in flying lead.

This new UV scanner features:

- New compact tube design to allow for easier installation. The housing is CNC machined from a single piece of Aluminium and houses all the internal components including the PCB and the UV sensor.
- The Quartz flame viewing lens is press-fitted into a heavy duty, high temperature resistant industrial seal. The seal and lens are then press-fitted into the housing, providing a complete seal between the lens and the housing. This offers high temperature resistance and protection from ingress of external elements such as oil, water, moisture, dust, etc. into the UV scanner.

The seal design features a double sealing lip arrangement with one primary sealing lip and a dust protection lip. It is made from industrial-type rubber (Nitrile Rubber – NBR) with a metal casing (Carbon Steel) which imparts the rigidity and strength required of the seal.

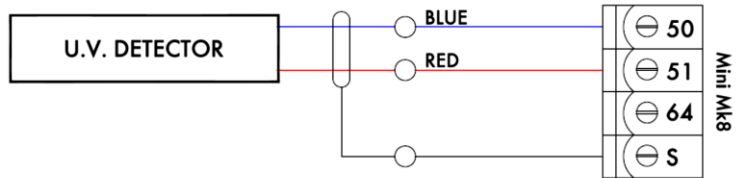
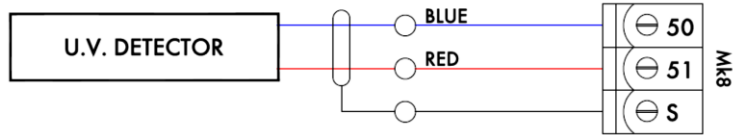
- 1.5 metre fixed flying lead, pre-wired as standard, featuring high-quality 2 core screened cable is connected to the UV scanner body through a PG11 gland, offering superior water, moisture and dust protection.

Specifications

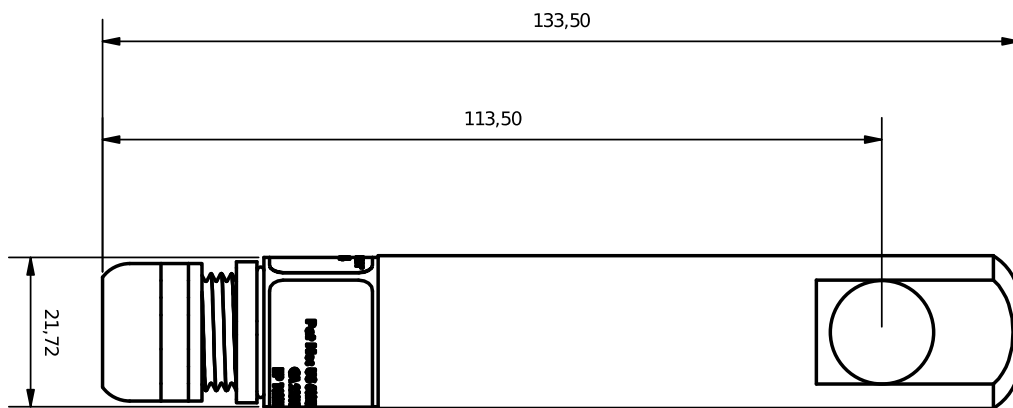
Part Number	MM80004
Flame Detection Technology	UV
Lens Angle	90°
Sensitivity Level	Standard
Self-Check	N/A
Max. Flame Detection Distance	500mm (20")
Max. Operating Temperature	60°C (140°F)
Min. Operating Temperature	0°C (32°F)
IP Rating	65
NEMA Rating	4
Housing Material	Aluminium
Lead Length	1.5m (4.9ft)
Cable Gland	PG11 – Built-in
Power Consumption	0.5W – Powered by MM
Mounting	Any orientation. UV lens must be in direct view of flame
Compatible With	Mk8 MM, Mini Mk8 MM, Mk7 MM
Dimensions (Length x Diameter)	133.5 x 22 mm (5.26" x 0.87")
Supplied with	Mounting clip

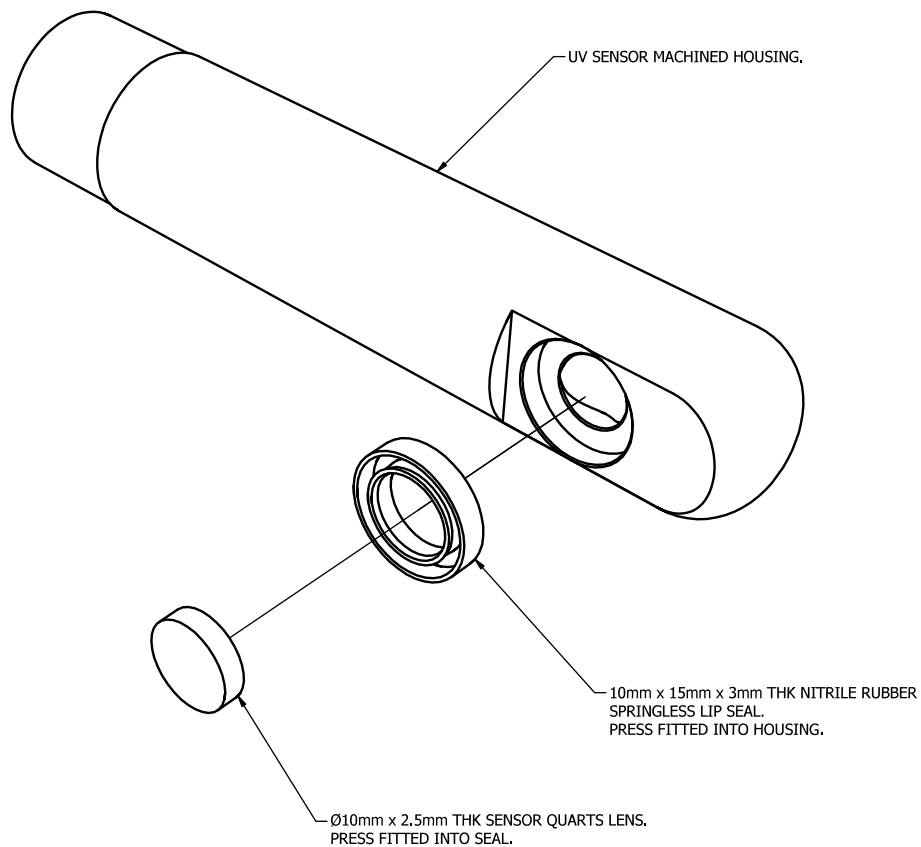
Wiring

UV Scanner wires	MM Terminal
Red	T51
Blue	T50
Screen	S

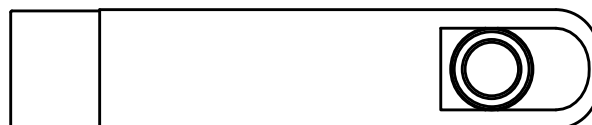
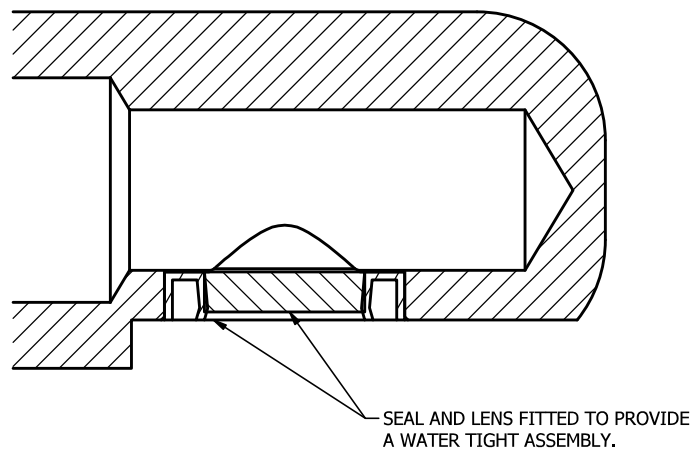


Technical Drawings





SECTION VIEW THROUGH LENS



Please contact Autoflame Technical Engineering Department for any further information or clarification on this matter. This document must be read in conjunction with the Autoflame technical manual, and all changes must only be made by factory trained and certified technicians who have a thorough appreciation and understanding of the Autoflame combustion systems and the combustion process in general. All local codes and state regulations must also be adhered to.